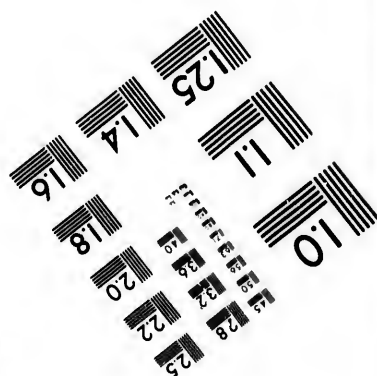
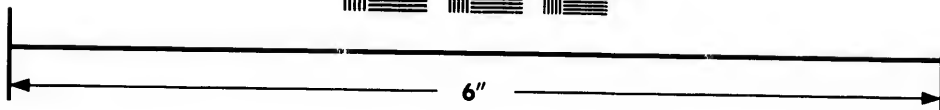
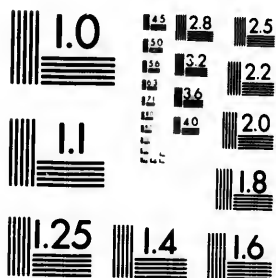


**IMAGE EVALUATION
TEST TARGET (MT-3)**



**Photographic
Sciences
Corporation**

23 WEST MAIN STREET
WEBSTER, N.Y. 14580
(716) 872-4503

Can

**CIHM/ICMH
Microfiche
Series.**

**CIHM/ICMH
Collection de
microfiches.**



Canadian Institute for Historical Microreproductions / Institut canadien de microreproductions historiques

© 1983

Technical and Bibliographic Notes/Notes techniques et bibliographiques

The Institute has attempted to obtain the best original copy available for filming. Features of this copy which may be bibliographically unique, which may alter any of the images in the reproduction, or which may significantly change the usual method of filming, are checked below.

L'Institut a microfilmé le meilleur exemplaire qu'il lui a été possible de se procurer. Les détails de cet exemplaire qui sont peut-être uniques du point de vue bibliographique, qui peuvent modifier une image reproduite, ou qui peuvent exiger une modification dans la méthode normale de filmage sont indiqués ci-dessous.

- Coloured covers/
Couverture de couleur
- Covers damaged/
Couverture endommagée
- Covers restored and/or laminated/
Couverture restaurée et/ou pelliculée
- Cover title missing/
Le titre de couverture manque
- Coloured maps/
Cartes géographiques en couleur
- Coloured ink (i.e. other than blue or black)/
Encre de couleur (i.e. autre que bleue ou noire)
- Coloured plates and/or illustrations/
Planches et/ou illustrations en couleur
- Bound with other material/
Relié avec d'autres documents
- Tight binding may cause shadows or distortion along interior margin/
La reliure serrée peut causer de l'ombre ou de la distorsion le long de la marge intérieure
- Blank leaves added during restoration may appear within the text. Whenever possible, these have been omitted from filming/
Il se peut que certaines pages blanches ajoutées lors d'une restauration apparaissent dans le texte, mais, lorsque cela était possible, ces pages n'ont pas été filmées.
- Additional comments:/
Commentaires supplémentaires:

- Coloured pages/
Pages de couleur
- Pages damaged/
Pages endommagées
- Pages restored and/or laminated/
Pages restaurées et/ou pelliculées
- Pages discoloured, stained or foxed/
Pages décolorées, tachetées ou piquées
- Pages detached/
Pages détachées
- Showthrough/
Transparence
- Quality of print varies/
Qualité inégale de l'impression
- Includes supplementary material/
Comprend du matériel supplémentaire
- Only edition available/
Seule édition disponible
- Pages wholly or partially obscured by errata slips, tissues, etc., have been refilmed to ensure the best possible image/
Les pages totalement ou partiellement obscurcies par un feuillet d'errata, une pelure, etc., ont été filmées à nouveau de façon à obtenir la meilleure image possible.

This item is filmed at the reduction ratio checked below/
Ce document est filmé au taux de réduction indiqué ci-dessous.

10X	12X	14X	16X	18X	20X	22X	24X	26X	28X	30X	32X
<input type="checkbox"/>	<input type="checkbox"/>	<input type="checkbox"/>	<input type="checkbox"/>	<input checked="" type="checkbox"/>	<input type="checkbox"/>	<input type="checkbox"/>	<input type="checkbox"/>	<input type="checkbox"/>	<input type="checkbox"/>	<input type="checkbox"/>	<input type="checkbox"/>

The co
to the

The im
possibl
of the
filming

Origina
beginn
the las
sion, o
other c
first pa
sion, a
or illus

The las
shall c
TINUED
whiche

Maps,
differen
entirely
beginn
right a
require
methoo

The copy filmed here has been reproduced thanks to the generosity of:

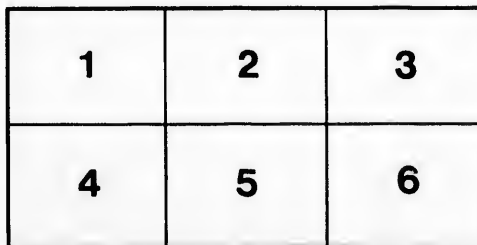
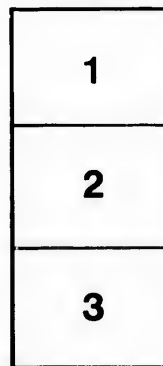
National Library of Canada

The images appearing here are the best quality possible considering the condition and legibility of the original copy and in keeping with the filming contract specifications.

Original copies in printed paper covers are filmed beginning with the front cover and ending on the last page with a printed or illustrated impression, or the back cover when appropriate. All other original copies are filmed beginning on the first page with a printed or illustrated impression, and ending on the last page with a printed or illustrated impression.

The last recorded frame on each microfiche shall contain the symbol \rightarrow (meaning "CONTINUED"), or the symbol ∇ (meaning "END"), whichever applies.

Maps, plates, charts, etc., may be filmed at different reduction ratios. Those too large to be entirely included in one exposure are filmed beginning in the upper left hand corner, left to right and top to bottom, as many frames as required. The following diagrams illustrate the method:



L'exemplaire filmé fut reproduit grâce à la générosité de:

Bibliothèque nationale du Canada

Les images suivantes ont été reproduites avec le plus grand soin, compte tenu de la condition et de la netteté de l'exemplaire filmé, et en conformité avec les conditions du contrat de filmage.

Les exemplaires originaux dont la couverture en papier est imprimée sont filmés en commençant par le premier plat et en terminant soit par la dernière page qui comporte une empreinte d'impression ou d'illustration, soit par le second plat, selon le cas. Tous les autres exemplaires originaux sont filmés en commençant par la première page qui comporte une empreinte d'impression ou d'illustration et en terminant par la dernière page qui comporte une telle empreinte.

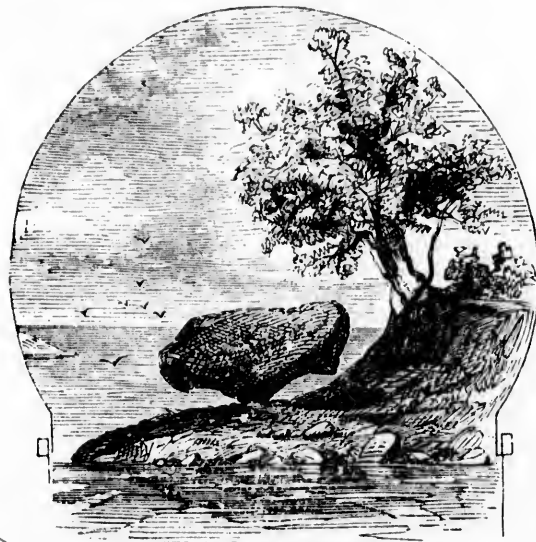
Un des symboles suivants apparaîtra sur la dernière image de chaque microfiche, selon le cas: le symbole \rightarrow signifie "A SUIVRE", le symbole ∇ signifie "FIN".

Les cartes, planches, tableaux, etc., peuvent être filmés à des taux de réduction différents. Lorsque le document est trop grand pour être reproduit en un seul cliché, il est filmé à partir de l'angle supérieur gauche, de gauche à droite, et de haut en bas, en prenant le nombre d'images nécessaire. Les diagrammes suivants illustrent la méthode.

Handwritten text in a decorative border at the top right corner.

Handwritten text in a decorative border at the bottom right corner.

A HAND BOOK
FOR
Lake Memphremagog,
WITH ROUTE LIST,



Balance Rock, Lake Memphremagog.

By JOHN ROSS DIX, Author of "Pen and Ink
Sketches," &c., &c.,

With Illustrations by the Author.

TO BE HAD AT ALL RAILWAY DEPOTS.

PRICE 25 CENTS.

Pa
por
nov
of
Yo
A
the
its
T
dep
the
of l
T
leav
and
T
Sutt
cent
from
is in
Guid
M

A H A N D B O O K

NOTICE.


Since this Book was published, the Connecticut and Passumpsic Rivers Railroad has been extended to Newport, the head of **Lake Memphremagog**. Travellers can now visit this charming sheet of water without change of Cars from Boston, and only one change from New York and Burlington.

A new and spacious Hotel has been recently erected on the Lake Shore, affording a fine view of the Lake from its windows and piazzas.

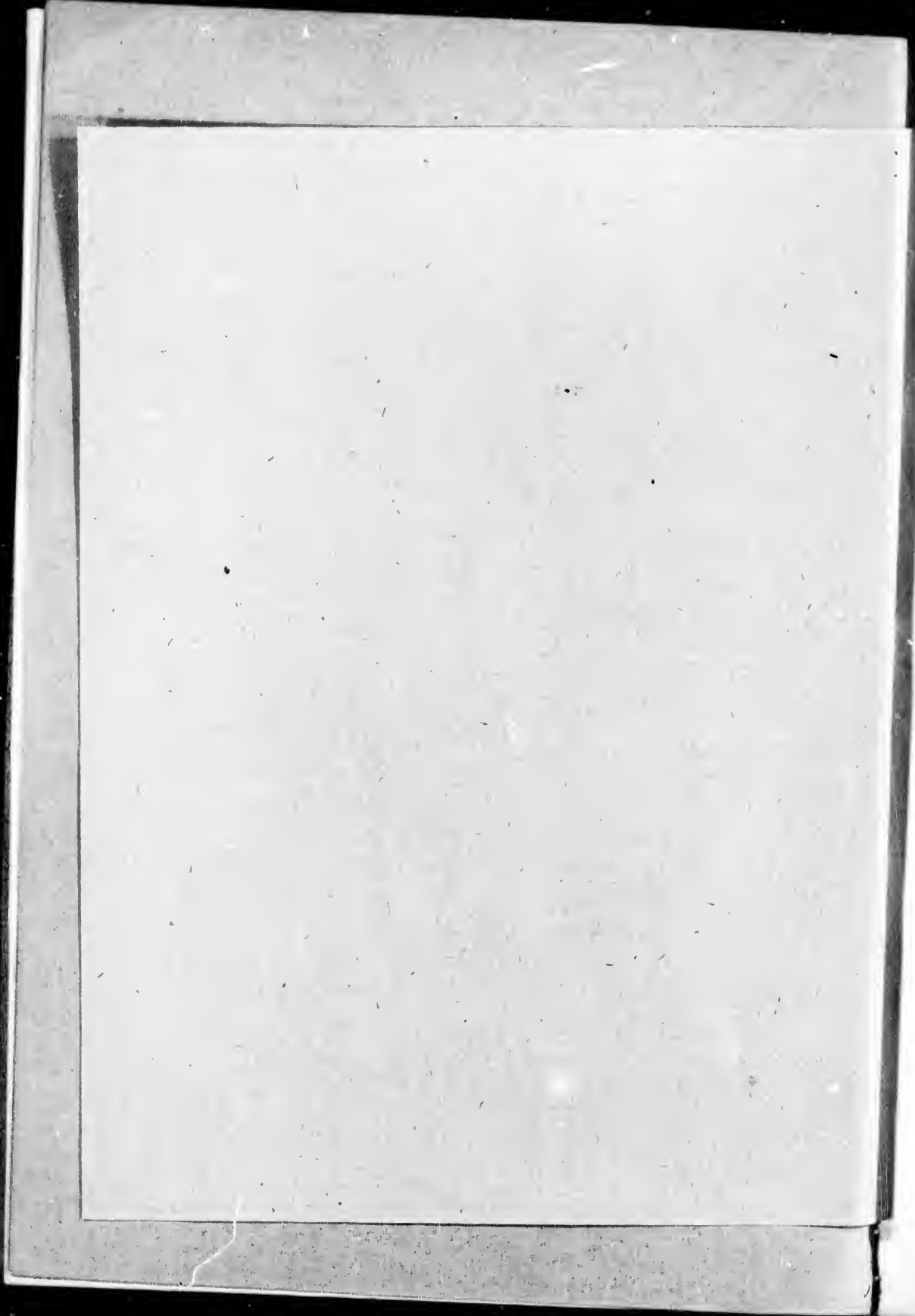
Passengers step direct from the cars into the railroad depot, which is in the basement of hotel, thus avoiding the importunities of coach drivers and the inconvenience of looking after baggage.

Travellers to White and Franconia Mountains can leave the Mountains in the morning, and reach Newport and Lake Magog at noon.

The celebrated Copper Mines of Canada, including the Sutton, Ascot, Acton, Orford, Dudswell, &c., and the recently discovered Gold Mines, are reached in a few hours from Newport.

 **The Route Table, on Pages 53, 54, 55 and 56, is incorrect.** See Appleton's and Pathfinder Railway Guides for recent changes.

MAY, 1864.



AU

TO

A H A N D B O O K

F O R

L A K E M E M P H R E M A G O G ,

W I T H R O U T E L I S T ,

B Y J O H N R O S S D I X ,

A U T H O R O F " P E N A N D I N K S K E T C H E S , " & C . , & C . , W I T H I L L U S -
T R A T I O N S , B Y T H E A U T H O R .

T O B E H A D A T A L L R A I L W A Y D E P O T S .

P R I C E 2 5 C E N T S .

B O S T O N :

P R I N T E D B Y E V A N S & C O . , 1 5 2 W A S H I N G T O N S T R E E T .

W

n
al
an
is
e
“
u
“
c

A H A N D B O O K
FOR LAKE MEMPHREMAGOG.

CHAPTER I.

Where it is and how to get there. The Connecticut and Passumpsic Rivers Railroad. Scenery on the banks of the Connecticut. Newport.

Something new ! *that* is the universal cry or craving now-a-days. It is so in the matter of travelling, as in almost everything else. Whatever may be the special attractions of any place, in the eyes of summer tourists generally, (poets and landscape painters perhaps excepted,) the gloss of novelty wears off after a few "seasons," and then comes a longing for "the far off unattained and (distantly) dim." Familiarity with "Springs," "Lakes," "Mountains," "Watering-places" and the like, is apt to breed, as in the case of

some of our acquaintance, a species of indifference approaching to dislike. Even in this great country, where, travel in what direction we will, there are summer resorts in plenty—each one, as its interested proprietors blandly inform us—“a little Heaven below.” The important question is asked every spring—Where *shall* we go this season? Where *can* we find fresh fields and pastures new? Mount Washington, Niagara, Newport, Cape May, the Mammoth Cave, and many other “Lions” of travel, have all been “done,” and we sigh like the voluptuary of old, for a “new pleasure.” Can such be found? We answer yes! Visit Lake Memphremagog, and our word for it—artist, hunter after the picturesque, seeker after health, gunner in search of game, angler for trout, pickerel or longe, bold mountain-climber, strong-armed boatman, lady wanderer who loves to saunter in verdurous groves and winding mossy ways—you will, each and all of you, exclaim after a sojourn on the banks of this lovely lake—EUREKA!

Supposing the reader to have decided on visiting Lake Memphremagog, the next thing requisite to know is how to get there. Fortunately, in these days of steam, that is an easy matter enough—for one may breakfast in Boston New York, Portland, Montreal or Quebec, and sup within the shadow of the “OWLS HEAD” Mountain, about twelve miles from the head of the lake, and in the very heart of its beauties. As at the end of this Hand Book will be found a complete

table of routes, we will suppose the visitor from the south to have arrived at White River Junction, Vt., little more than 150 miles from Boston, where the Northern and several other Railways connect with the Connecticut and Passumpsic Rivers Railroad, which latter line will convey you to within fifteen miles of the head of the lake, at Newport.

Sufficient time elapses between the arrival of trains from the south, and the departure of that for the north, for the tourist to get a capital dinner at the Junction Hotel; or if he chooses, there is a good Restaurant close to the track. If a stroll be preferred to "creature comforts," the Railroad Bridges and the works of the Railway Companies, will repay inspection. Here White River flows into the Connecticut. The scenery around is picturesque, but the reality of Railways has gone far to banish the "romance" of landscape. If the reader will read the graphic description of a Railroad "Junction" in Dickens' tour of "Two Idle Apprentices," he will get a very accurate notion of the particular one to which we are alluding.

It is one very great advantage of a tour to Lake Memphremagog, that the way to it, for the most part, lies among some of the most charming scenery in the world. The loveliness of the valley of the Connecticut, and the beauty of the river, has afforded many a theme and scene to poet and artist. For a distance of about forty miles on the Connecticut and Passumpsic Rivers Railroad, the track lies close to the river, af-

fording fine opportunities of seeing its placid expansion, picturesque falls, and various windings, as well as of the verdant intervals on its either side, the mountains by which they are bounded, and the farms and villages which gleam white among embowering trees on the gentle slopes and pleasant *plateaux*. But a truce to anticipation. Amos Barnes Esq., the efficient Conductor on the line, cries "all aboard," and in another moment we cross White River Bridge *en route* in earnest, for the lake,

Now and then we catch glimpses of the river, just enough to whet our eye-appetite for that which is to come. One object of interest is a large dam. Crossing Blood brook, the Hanover and Norwich Station is reached, ($4\frac{1}{2}$ miles from White River.) These villages cannot be seen from the Railway, as each lies on a high table-land about half a mile from either bank. You may notice on the depot platform, some spruce young Cadets in uniform, chatting with pale, or merry-visaged student-looking young men; the former are from Norwich University, a Military Educational Establishment; the latter from Dartmouth College, (Free Bridge) at Hanover. Six miles further on is Ompompanoosuc Station, before reaching which, we note several islands in the river. The euphonious appellation of the place is derived from the fact that formerly it abounded in wild onions—possibly it was the "Wethersfield" of the Indians. Thetford, famous for its Academy, is next reached; then North Thetford, Fair-

lee, Orford, and Piermont Crossing, a quarter of a mile from which, is the picturesque old bridge over the Connecticut, (for an engraving of which, see page 11.)

After a ride of five miles we pass Bradford and get to the Haverhill depot; the village on the New Hampshire side of the river is beautifully situated on a tableland, high above the stream. Far beyond, is seen Moose Hillock, 4,636 feet high, the Sugar Loaf Mountain and Black Hill. The river views here are remarkably fine, and the meadows wonderfully verdant, owing to the frequent overflowing of the Connecticut, which, receding, leaves, Nile-like, a rich deposit of alluvia on the land.

Newbury—perhaps the prettiest village on the river, now appears in sight—Mount Pulaski forming a magnificent back ground to its churches, its well known Wesleyan Academy, stores and dwelling houses. Here is one of the best hotels in the State—the Newbury House, kept by Mr. Nelson B. Stevens. If time permits, the tourist should by all means spend a day, at least, here, and ascend Pulaski, from whose summit he will have one of the finest views of the valley and river. Here too are the far-famed *Sulphur Springs*, to which in summer hundreds of invalids resort. Near Newbury is a fine bend of the river called the Great Ox-Bow, a sketch of which we give on the next page.

Leaving Newbury, we see on our right, in the distance, the Franconia Range, which alone hide the White Mountains; and shooting along the base of In-

gall's hill, reach Wells River Village, where is the terminus of the White Mountain Railroad. Still running by the river side, we next reach McIndoes, where there is one of the finest falls on the Connecticut. A mile or two further on is Barnet, a place almost exclusively inhabited by Scotchmen, some "cannie" Caledonians having purchased the land on which it stands, years ago, and their descendants still keeping possession of it.



Great Ox-Bow.

Here the track leaves the banks of the Connecticut and goes thundering along the banks of the Passumpsic River, (a tributary of the former,) past McLerans and Passumpsic Depot, to St. Johnsbury, one of the most important places in Vermont. Here is a capital Hotel, the St. Johnsbury House, kept by Mr. Watson. Here is located the world-renowned Scale Factory of the Messrs. Fairbanks; indeed these works and their surroundings, form a distinct village called after its founders, whose vast influence for good is owned and appreciated by all who know them. Fairbanks Village is well worthy a visit; it is the very Eden of Manufacturing Industry.

After passing St. Johnsbury Centre, the Passumpsic becomes so very tortuous that one might fancy a gigantic corkscrew had been liquefied. Just before reaching Lyndon, there are some picturesque falls which will delight an artistic eye. The next station is West Burke, where stages are in waiting to convey passengers to Willoughby Lake, (five miles distant;) there Mr. Bemis keeps a first rate Hotel on the lake's bank. In a short time, after ascending a rather steep grade, the track runs along a high bank at the base of which is Bell Water Pond—a sheet of water about three miles in length, and averaging one in width. It is famous for its longe. At the outlet of the pond is Barton, the present terminus of the Railroad, which, however, will soon be extended to Newport.

There is little in Barton to detain the tourist. Mr.

Milton D. Thompson, the very obliging and active Depot Master, will afford strangers every facility in procuring stages to convey them the remaining 15 miles of their journey; or if a stay for the night be preferred, there is the Barton Hotel, where Messrs. Hill & Buck will show guests every attention. There is also a Railway Hotel, but stages run to and from the *former* house.

Immediately on the arrival of the train, stages start for Newport, where we will suppose the reader to have arrived; and now we are fairly on the banks of Lake Memphremagog, which as we descend the hill to the village, stretches away to the north, until in the far distance, it blends with the purple shadows of the surrounding mountains.

Excellent accommodations may be found at the Memphremagog Hotel, which is famous among epicures for its fish. Pickerel, trout and longe are scarcely out of the lake, before, like St. Lawrence of old, they are broiling on a grid-iron—out of the water into the fire, may (to *us*) pleasantly vary the old adage. But we have no time for culinary raptures; therefore let us mount the neighboring hill and get a general view of the lake and landscape—'twill well repay the trifling toil of climbing. This pedestrian feat accomplished, we hear as we descend, the bell of the Steamboat, and hurrying on we soon reach the wharf, at the end of which the "MOUNTAIN MAID" is (for it is 8 o'clock, A. M.) waiting for her living cargo.

ive De-
in pro-
5 miles
eferred,
& Buck
a Rail-
former

es start
to have
of Lake
to the
the far
the sur-

at the
pictures
eely out
hey are
he fire,
But we
let us
view of
trifling
blished,
at, and
end of
'clock,



Old Bridge at Piermont Crossing.

CHAPTER II.

Trip on the Lake—Bays and Landings—Passenger Portraits—Province Line and Island—Whetstone Island—A Treasure Cave—The Mountain House.

Here come the passengers by one's, and two's, and three's, at first, then in groups of a dozen or more—then one's and two's and three's again—and as the Captain cries "Let go there,"—the inevitable *last* man, who (being of a portly and plethoric habit) comes panting and perspiring and looking daggers at the Captain, who we may here introduce to the reader as Captain Fogg, than whom we do not know a pleasanter or politer personage. In fact he is just the man for the position he occupies, and so well posted up as to the lake and everything concerning it, that had he time to answer all the questions put to him by his eager passengers, we might as well have left this Guide-book unwritten.

While the boat is rounding her bows to the north, we may as well give a brief, general sketch of the lake—whose name may at first be rather puzzling to tongues not quite as much accustomed to aboriginal nomenclature as Mr. Schoolcraft. Memphremagog is doubtless a corruption of the Indian name, *Mem plow-bou-*

que, which signifies a large, beautiful expanse of water ; at least, so says Mr. Pratt, in his *Gazetteer of Vermont*. Its extreme length is nearly 50 miles—but only a little over 30 miles are navigable by large boats. The average breadth is about three miles. About one-third of its length is situated in Vermont—the remaining two-thirds are in Canada. Three streams empty themselves into it at its southern extremity ; the Clyde, Barton and Black Rivers. It is also fed by some smaller tributaries and springs, and has its outlet at Magog, where it furnishes a magnificent water privilege. It finally empties itself into the St. Francis River, and its waters thus find their way to the St. Lawrence.

We will now endeavor to describe it in detail, by pointing out as we steam along, whatever may be deemed worthy of note or comment.

We have not to go far in search of the picturesque ; it is one great and charming feature of Lake Memphremagog, that its shores, throughout its entire length, are indented with beautiful bays, between which, in many places, jut out bold headlands ; in fact, there is not a “bit” of tame scenery to be met with ; and so one is spared the disagreeable necessity—inevitable in some less favored locality—of travelling ten dreary miles to see perhaps one mile of scenery worth looking at. Another object worthy of note, and it may as well be mentioned here—is the great purity of its waters ; you never see weed or scum fringing its shores ;

close to either rocky or grassy margin, it is as pure as at its centre.

At the first glance from the deck of the *Mountain Maid*, the lake appears as if it were completely land-locked by the mountains within the range of vision; in fact, it seems almost circular, owing to a slight curvature, which from this point cuts off the prospect northward. The eastern shore is less mountainous than the western, generally; here it gently slopes to the water, the upland being dotted with farms and pretty dwellings. Right ahead is seen a projecting point, or spur of land, called *Indian Point*, where Indians encamped as lately as sixty years ago—so at least we were informed by an old gentleman, a native of this region, who well remembered having seen their wigwams, with squaws sitting in front, making or mending nets. Immediately after leaving Newport, a wooded point is passed, and *Adams' Bay* comes suddenly into view; this is a semi-circular indentation of the lake, and highly picturesque. On the right, and a little to the north, the waters widen and form a sort of harbor, in which is a cluster of small islands, of which those called *Black Island*, and *Tea-table Island*, are the most noticeable. These islets, however, cannot be seen to advantage from the Steamboat, but a good view of them may be obtained from the high land near the road from Newport to Derby Centre, on the eastern, or from the stage road, on the western shore.

Other islands are seen ahead, which we shall describe

as v
com
side
Her
rises
appe
whic
from
pecu
men
ing,
that
in a

B
omit
ing,
thes
tain
scrip
gent
tern
endu
ble a
ing-r
evid
on "
ter,
of m
in L

as we reach them. Having passed *Adams'*, we now come abreast of *Potton Bay*, (also on the western side) named after the township in which it is situated. Here the prospect is extremely grand. On our left, rises *Bear Mountain*, part of a continuous range which appears to terminate in distance, in the *Owl's Head*, which towers above all its aspiring neighbors. Viewed from this direction, this now famous mountain has a peculiarly rounded summit, which seems riven into immense fissures; this bald and craggy top is very striking, rising abruptly, as it does, from among the trees that clothe the mountain from the water's edge, to within a few rods of its crest.

But we must not, in our admiration of the landscape, omit to notice the "figures" which, artistically speaking, give life to our picture. We need not look far for these; not further indeed than the deck of the *Mountain Maid*, on which specimens of almost every description of the *genus* tourist may be seen. Those two gentlemen dressed in suits of the true sportsman's pattern and cut, seated on trunks which have evidently endured much wear and tear, and yet are as serviceable and strong as ever—who are surrounded with fishing-rods, camping materials, guns and what not, are evidently a brace of English travellers, who are intent on "bar," deer, and fish, for the capture of which latter, one of them rather ostentatiously exhibits a book of magnificent "flies" spoon-hooks and lines, bought in London, and warranted to "kill." Near them is a

rough looking fellow, whose rifle and shabby fishing-rod are strapped together; he looks contemptuously at the blue and red hackle, and the London flies generally, and feels quite sure they wont "du." Nor will they—for that shrewd Canadian can, with a few feathers, some bits of silk and a hook, make, by the water-side, a "fly" which shall fall like a snow flake on the water, and be eagerly snapped at by some deluded member of the Fish family. That youth with a beard like those seen in Vandyke's pictures—and clad in blouse and belt, is doubtless an artist, on the lookout for "bits," "studies," "sky effects" and "distances." For a month or two he will wander along these shores, or on yonder mountains, and next winter we shall see in the *Post*, or *Herald*, such a notice as this. "We have just examined with much pleasure, a folio of magnificent views on Lake Memphremagog, drawn from nature, by our talented fellow citizen, Salvator Guido Claude Carmine Esq. They are far superior to the productions of Turner, Gainsborough, Horace Vernet, or any of the artists of the old world, and we hail them as a proof that American painters are superior, even to the much vaunted old masters," &c., &c. The conceited looking young fellow who now and then pulls out a note-book and inserts a memorandum therein, is a newspaper letter writer, who is prone to exaggerate, and deals largely in superlatives. And the lady passengers! There is among them a whole "bevy" of beauties—about seventeen young ladies, who with

their Preceptress have come to see the lake ; a more charming party never danced on the deck of the Mountain Maid. But we have only time to describe one other personage, and this time, do so "with a purpose."

Do you observe that individual with rather florid whiskers, who is strolling among the baggage and freight on the lower deck, assuming a look of unconcern, and yet quietly taking notice of everything ? He is not one of the crew, for he does not handle a rope or lend a hand to anybody ; he is not a passenger, for he looks, without betraying any interest at the scenery, and is not in tourist costume. He seems of a misanthropical turn of mind, for he speaks to no one ; but his want of words is amply made up for by the use of his eyes. They seem to penetrate boxes, barrels, bales and baskets. Is he meditating a larceny ? Does he intend to clandestinely abstract their contents ? By no means—he is literally and strictly in the path of "duty." He is a Custom House Officer.

His presence tells a story. The Mountain Maid is now drawing near the boundary, or Province line of Webster and Ashburton renown, which separates the United States from Canada—after passing which, be you Monarchist or Republican, you will assuredly have to pay "duty" to Queen Victoria's Government, if you have anything on which it can be levied—and you fail to hide it from that lynx-eyed official, who, however, is polite in the performance of his duty, and gives no unnecessary trouble.

Now just look to the land on your left, and you will observe a small farm-house ; that is the last dwelling in Vermont in this direction. A few rods from it is the small iron post which marks the identical spot which the Province line traverses ; glance to the right and you see that you are abreast of an island—through which also the line runs, and beyond this, far away, on the crest of the eastern hills, you may observe a gap through the woods, which indicates the course of the line in that direction. The iron post is quickly past, and we have exchanged the domains of Uncle Sam, for the dominions of Queen Victoria ; we are in Canada !

Province Island is long, low, and covered for the most part with trees. It contains about 40 acres of excellent arable land, which are cultivated successfully, by Mr. Bavineau, a Frenchman, who, with his family, being the sole residents of the Island, is “ Monarch of all he surveys.” It does not often happen, that a man by walking a dozen steps, and in the space of half a minute, can pass from the rule of a President to that of a Queen. Indeed, Farmer Bavineau can stand with one foot in the United States, and the other in the British dominions ; or at will, and at once, place himself under the protection of the wing of the American Eagle, or the paw of the British Lion.

Just beyond the “ line” is *Baker’s Landing*—from thence, still “ hugging” the western shore, the Mountain Maid glides onward, while a constant succession

of beauties on lake and land, charm and interest the beholder. The next landing is "Rollins'," which is situated at the foot of a remarkably steep declivity. Here the boat takes in wood, and not a little amusement is afforded by the swarm of ragged little rascals who assist in this operation.

The Mountain Maid, like all other Maidens, now becomes somewhat capricious; and turning her stern toward the eastern shore, crosses the lake diagonally, affording splendid opportunities of views, "ever charming, ever new." The Owl's Head Mountain now looms up grandly, clad in its garniture of living green—its craggy head, seemingly craggier than ever. The deep gorge on the summit is now seen to great advantage, and passengers begin to speculate how far it may be across. Various opinions are given—the truth is, it is about 40 rods from ridge to ridge. Farther north is Mount Elephantis, (or Sugar Loaf) and Ridge Mountain; and rising abruptly from the eastern bank, Basin Mountain. But on glides the steamer, and *Harvey's Landing*, situated at the entrance of East Bay, is reached. This bay which runs inland in a north-easterly direction for nearly seven miles, is a little lake in itself, and a favorite fishing ground. By means of a creek near its northern end, it communicates with another sheet of water called Fitch Bay.

Near the entrance of East Bay is an island called *Whetstone*, or *Fitch's Island*—(the latter named after a man who once claimed to own it.) This island is re-

markable for a quarry of *Novaculite*, which may be seen like a yellow line, near the water's edge, on its western side. Of this *Novaculite*, capital whetstones can be made; indeed, some years ago, the quarry was worked by a Company from Burke, who disposed of many tons of it annually. So excellent was it, that it almost drove the famous Turkey stone out of the market, and the Company were being amply remunerated, when from some cause or other, the British Government put a stop to the quarrying; not however in order to monopolize the trade itself, for since the Burke Company were driven off, the *Novaculite* has remained undisturbed. This was, to say the least of it, a "Dog in the Manger" proceeding. A similar veto was put on mining on Owl's Head, of which more anon.

Occasionally, when passengers wish to land, or embark there, the steamer crosses the mouth of *East Bay* to *Magoon's Point*, a spur of land which derives its name from a farmer who resides on it. This place has of late, attracted some attention, from the fact of there being an unexplored cavern in its vicinity, in which cave, it is asserted, a considerable amount of treasure is concealed. It is said that many years ago a Roman Catholic Chapel in Canada, (we believe at a place called St. Francis,) was plundered of its treasures, and that the robbers concealed their booty here. We are credibly informed that persons are now living, who saw two massive gold candlesticks which were found in or near the cave, buried in sand. Several unsuc-

cessful attempts have been made to explore this mysterious place—but it is gravely declared that every daring individual who descended and penetrated but a little way, came back in a state of the utmost alarm, having “heard fearful noises and felt like being choked,” a phenomena which would be easy of explanation by any schoolboy who had but slightly studied acoustics and chemistry—since echoes and carbonic acid gas would produce precisely similar effects. We hear that explorations on a large scale are to be made this summer, (1859,) and only hope that the laborers in this Magog “diggin” will be more fortunate than the sanguine gentlemen who sought to lay their “appropriation claws” on the treasures of the late gallant Captain Kidd.

On leaving Harvey’s Landing, the Mountain Maid returns to her “old love,” the western shore, and zig-zagging it in a slant direction, northwards, directs her course towards, as it would seem, the base of Owl’s Head. The mountain now looks grander than ever; dwarfing, as it does, all its surrounding brethren. We can now see the grey walls or ledges of rock which stripe it transversely; seemingly impossible to scale, and ravines and gorges of vast magnitude. About a mile and a half off, on our left, is Round Island, to be spoken of presently. As yet, there are no signs of any “House of Entertainment”—but before long a wharf with two flag staffs, a pretty summer house, like a Kiosk—the roof of a dwelling—and then its

front, appears. In a few moments more, we have left Harvey's Landing four miles behind us, and stand on the very convenient wharf of the MOUNTAIN HOUSE, where we are welcomed by the Proprietor, Mr. A. C. Jennings, who, as former Landlord of the St. Johnsbury House, Island Pond Hotel, and other first rate Establishments, we had long and favorably known. Here let us remain for a few days, for this is the Paraisaic portion of the lake—if where *all* is “beautiful exceedingly,” such a term can be fitly applied. On glides the Mountain Maid, which we have ungallantly abandoned; but she has plenty to flirt with her in our absence, and is of so forgiving a nature, that the paltry sum of a dollar, or less, will induce her by and by, to receive us on our former (deck) footing.

T

ua
a r
at
the
wa
an
eas
sur
tai
On
ru
lov
Ba
her
Be
lea
ly
wh

have left
stand on
N HOUSE,
Mr. A. C.
St. Johns-
first rate
y known.
the Para-
beautiful
ied. On
ngallant-
with her
are, that
ce her by
ooting.

CHAPTER III.

*The Mountain House—Island Scenery—The Palisades
Bathing Place—Balance Rock—Skinner's Cave
and its Legend.*

The Owl's Head Mountain House is delightfully situated on the western shore of the lake. It stands in a natural Amphitheatre, on a picturesque little plateau at the base of Owl's Head, very near the margin of the waters. A neat and very convenient plank pathway extends from the front of the house to the lake, and on a wharf at its further end, passengers land as easily as possible. On a rocky knoll is a picturesque summer house; and back of this a miniature mountain, from whose top exquisite views are commanded. On the south side of the house are flower gardens—rural walks, and rocky pathways; and on the north, a lovely little inlet with a shingly beach called *Sherman's Bay*, in compliment to the lady Preceptress, who with her charming pupils, visited the house last summer. Between this bay and the house is a bridle path which leads to the summit of Owl's Head. Towering grandly above all, is the Mountain itself, a brief account of which we will give presently.

Taking our post of observation in the little summer pavilion before referred to, a glorious prospect bursts upon the eye. Immediately in front rises the *Basin Mountain* to a height of some 12 or 1500 feet, and entirely covered with foliage. Stretching grandly away, north and south, the lake is bounded by lofty mountains, verdant slopes, and bold headlands. From this point, also five islands are visible. Directly in front, and distant about two miles, is Skinner's Island; a very little to the north of it is Long Island; between Skinner's and the main land, is Minnow Island; a mile and a half distant on our right is Round Island, and southwards, Province Island, already described. All these are within a morning boat-ride of the house, and each possesses attractions peculiar to itself. Suppose we make our first boat trip to LONG ISLAND.

As its name implies, its length is considerably greater than its breadth—the former being about one and a half miles, the latter not half a mile. This Island is covered thickly with trees, and is chiefly remarkable for its bold, rocky shores. Near its northern end, on its western side, are some perpendicular rocks named the Palisades, from their resemblance, on a small scale, to those of the same name on the River Hudson. These are well worthy a visit. Not far from these is a beautiful, safe, and sheltered natural bathing place. The shores on the eastern side are very romantic, and to a geologist, highly interesting. As for an artist, he

might go into fits (of enthusiasm) on beholding the "rock studies" which abound here.

But the "lion" of Long Island, is the **BALANCE ROCK**.



Balance Rock.

On the ridge of a granite rock, which slopes towards the water, stands another huge mass of granite, weighing many tons, and resting only a single point or pivot, in the same manner as does the celebrated Logan rocking stone in Cornwall, England. This one, however, does not move. How it got into its present position is purely a matter of conjecture. Some suppose it to have been brought on ice, which, thawing, deposited it there. Others imagine the waters of the lake were once higher than now, and that when receding, winds and storms washed away the earth which might have surrounded its base. We profess to hold no

opinion on the subject, and leave the geologist to look to it. A curious tree grows close to, and leans over the stone, giving it much the appearance, at a distance, or in the gray of the evening, of a sarcophagus, and a familiar emblem. To be sure, one has to *imagine* the drooping branches of the willow; but as we all know, fancy is a very fertile artist, and can accomplish wonders.

Leaving the Balance Rock behind us, we now row to the northern end of SKINNER'S ISLAND, which is not of so great extent as Long Island, but equally picturesque. It, too, has its "lion" in the shape of a Cave on its western side, close to its northern extremity. This is a very favorite resort for visitors, and is easily reached, it being little more than a mile from the Mountain House, from which it can be plainly seen. Nearly all such places as these have their legends, and Skinner's Cave is no exception to the almost general rule. But before we relate it, let us say that the Cave is close to the water on the island side, is about 10 feet wide at the entrance, from 12 to 14 feet high, and extends into the rock a distance of some 30 feet, narrowing from the outside until the two walls of the cave meet at the end.

Here then is the legend of SKINNER'S CAVE, which a friend of ours has "done" into rhyme. It is necessary to preface it with a little plain prose, to render the verse intelligible. In the year 1812, during the last American war with England, smuggling was car-

ried on to a great extent on Lake Memphremagog. A determined attempt was made by both the belligerent parties to put the illegal traffic down, and one after another, all the smugglers were captured but a certain daring dealer in contraband articles, named Uriah Skinner. This worthy baffled the ingenuity of the Custom Officers for a long time, but was at last—stay—you shall hear, dear reader, all about it presently. After a rather florid description of the lake, our rhyming friend proceeds as follows, in his ruse, which he calls

The Bold Smuggler of Magog.

* * * * *

In a certain part of this exquisite sheet
 Of water, the "States" and "East Canada" meet,
 Here, though you can't see it, the "boundary line"
 Of Webster and Ashburton passes; in fine,
 One-third of the lake's in Vermont, at the least,
 The other two-thirds are in Canada East;
 The reader must fail not to understand this,
 Or the point of the story he'll certainly miss.

* * * * *

Let the reader imagine an Eden-like scene;
 Mountains robed to their summits in drapery of green,

With three miles of calm and blue water between,
 And then he will possibly know what I mean :
 And the name of this lake, on whose shores neither bog
 Nor flat shores are seen, is this,

M E M P H R E M A G O G !

A queer word to pronounce just at first, but it slips
 In a very short time smoothly over the lips ;
 The rhyme forced me to mention the "bog," when I say
 You'll be right if you will but the emphasis lay
 On one vowel alone—I refer to the A,
 And you'll certainly then, not be out of the way.

On this beautiful lake many islands are found—
 There is "Skinners" and "Long"—"Province"—"Minnow"
 and "Round"—
 On the *first*, will the scene of this legend be found.

When war's dogs are slipped—there is plenty of juggling,
 And, among other kinds of rascality—*smuggling* ;
 On Lake Memphremagog, such practice was "fine,"
 For across it, you know, runs the old Province Line ;
 And to dare-devil men 'twas not hard in the least,
 From Vermont to slip into Canada East :
 Of course, as most matters have *two* sides, we here see
 A similar feat might be done *vice versa*.

Now, had *I* such a pen
 As has one of those men,

Messrs. Reynolds or Cobb—or Ned Buntline, why then
I'd all of these smugglers of Magog describe ;
As I've *not*, I'll take one as a type of the tribe !

Fancy a fellow, brawny and brown,
With very black hair that hangs shaggily down,
With whiskers remarkably bushy and black,
With fists which might give a most terrible thwack ;
With very fierce eyes under dark heavy brows,
That flashed like a cat's when it springs on a mouse,
Or like coals in a cavern that gleam fiery red,
With a great roman nose, so uncommonly red,
That whenever he washed it ('twas seldom) I wis,
The water would certainly bubble and hiss !
With a mouth, firm, compressed, and much prone to a sneer,
With a purple scar stretching from chin unto ear ;
With a huge dagger stuck in the belt round his waist,
And five or six pistols beside it placed ;
With a heavy cutlass not long nor pliant,
Such as little "Jack" used when he slaughtered the "Giant,"
With great heavy boots—and as heavy a purse,
With a tongue that scarce wagged but it uttered a curse !
Fierce as a tiger—as cruel as Nero—
Fancy all these, and you'll picture my hero ;
Whose name, for fame has preserved the same,
Was URIAH SKINNER, who'd always on hand
Plenty of articles contraband.

Of all the Smugglers who plied on the lake,
Uriah Skinner was hardest to take ;

The officers hunted him often, and yet
 Uriah Skinner they never could get!
 For *if* his boat they e'er chanced to have sight of,
 He vanished, as 'twere, and was speedily right off,
 Like the Flying Dutchman, he seemed to melt
 Into mist; so that some who pursued him, felt
 Inclined to believe he had something to do
 With a certain dark gentleman—you know who!

The pitcher may often go to the well,
 Yet at last be broken; so it befell
 In the case of Uriah—for that bold chap
 Was caught at last like a rat in a trap!

* * * * *

Night on the lake, so clear and calm,
 The night breeze sings in the pines its psalm;
 Stars shine bright in the dark blue sky,
 And the crescent moon sails in her glory on high:
 Above and below, it is all serene,
 Who, as he gazed on the peaceful scene
 At that moment, would fancy that nine or ten
 Very keen-sighted, and well-armed men,
 Motionless, and still as the dead,
 Were ambushed under the great Owl's Head?
 And their ears were open as well as their eyes,
 Listening and looking alike for a prize;
 There they watched to catch the first glimpse or note
 Of Skinner, expected that night in his boat.

“ Look—don't you see!
That, Skinner must be !”

Oh, Skinner ! bold smuggler ! there's peril for thee !
For down to the shore with leap and bound,
The officers rush—as goes a blood-hound
On a fugitive's track when the scent is found !
The boat is manned, and they're off the next minute,
They see Skinner's boat, and Uriah S. in it ;
Now the chase grows eager and hot,
And Skinner himself thinks so too, I wot,
For his boat speeds over the waters blue,
Swiftly as flieth an Indian's canoe,
And he has an Indian's craftiness too ;
Now they near him—now they are on
His heels as it were—and now—HE IS GONE !

But where?
How they stare
And rave and swear !

And how—here, there, and everywhere,
The island they search—for they think, like the deer
Who leaves the forest and takes to the floods,
The smuggler has quitted the lake for the woods !
But all they find is the empty boat,
Which one of the officers pushes afloat :
The fruitless search they at length give o'er,
And Uriah Skinner was never seen more !
'Tis said, that one of the officers swore,
A strong brimstone odor pervaded the shore ?
And another averred that he saw Skinner go
In the clutch of old Nick, to the regions below.

Nearly six years had passed away,
When a Fisherman out in a storm one day,
Was very near making an awful plunge
To become a meal for the pickerel or longe ;
But through the mist, gazing eager-eyed,
In the side of an island, a cave he spied,
And in less than a minute, was safe inside.

Very soon passed the storm, and then,
Ere he prepared to go fishing again,
He looked above, beneath, and around,
And what do you think the fisherman found ?
Neither a golden nor silver prize,
But a skull with sockets where once were eyes ;
Also some bones of arms and thighs,
And a vertebral column of giant size :
How they got there, he couldn't devise,
For he'd only been used to common-place graves,
And knew nought of "organic remains" in caves :
On matters like *those*, his wits were dull,
So he dropped the subject as well as the skull.

'Tis needless to say
In this later day,
'Twas the smuggler's bones in the cave, that lay :
All I've to add is—the bones in a grave
Were placed, and the cavern was called "SKINNER'S CAVE."



Skinner's Cave.

Between Skinner's Island and the main land, is MINNOW or MINNIE ISLAND, perhaps the latter name refers to its diminutive dimensions. Close to, and around it is the great fall seining place, thousands of fish being taken from the lake at this place, every year.

Standing on the rocks in front of the Mountain House, an excellent view of ROUND ISLAND is obtained, and certainly, it is one of the most beautiful objects on the lake. On a calm day, the effects of light and shadow are exquisite. In a photograph by Messrs. Gage & Rowell, of St. Johnsbury, (which may be bought at the Mountain House,) these effects are most happily preserved. Nothing can be more perfect than this view, which, whether as it regards foliage, rock, water or island, is first-rate of its class. Round

Island is only a mile and a half from the house, and a very pleasant boat ride will give an excellent appetite for the remarkable quantity of berries of various descriptions, for which it is remarkable.



Round Island.

As

asc
gl
de
be
in

pa
cri
kin
Th
sto
sh
me
yo
it

CHAPTER IV.

*Ascent of Owl's Head—Maxims for Mountaineers—
Picturesque Rocks—The Old Field—Fern Hollow
—The Toll Gate—Crinoline Chamber—Half-way
Log—Moses' Rock—The Staircases—Refreshment
Hollow—Views from Summit—A Fish Story—Novel
Descent.*

And now, having visited all the islands, suppose we ascend the Owl's Head Mountain, and at one bird's eye glance, observe, as a whole, scenes which we have been describing in detail, as well as countless attractions besides. A few maxims for "Mountaineers," may be in place here.

Ladies—even though it should cost you a parting pang, when preparing for the upward trip, abandon crinoline and hoop—and don't dress yourself as Villikin's Dinah was ordered to—"in gorgeous array." The worse your attire, the better you will feel. Wear stout shoes or boots; if damp weather, rubbers; and should you *have* a Bloomer Costume, put it on by all means, for in some parts of the ascent, you will "bless your stars, and think it luxury"—at least you'll find it amazingly convenient.

Provide yourself with a staff some five feet long, a little sharp at the lower end; something in fact, like the Swiss Alpenstock which is shod with iron; this, however, is only necessary where ice has to be crossed, and such is not the case here.

Do not be in a hurry when you set out; take it coolly at first; you will experience the great benefit of thus husbanding your strength when you get half way up, where it will be most needed.

Carry with you some biscuits or sandwiches, and a little tin cup for water—there are several springs on the way up.

These maxims are for ladies; as for the “sterner and stronger” (?) sex, they must get on or up as they best can, without advice from us.



Owl's Head Mountain.

ASCENT OF OWL'S HEAD.

A direction post on the north side of the Mountain House, indicates the path to the summit. For a little way the course is tolerably level, but after about ten minutes walking, the ascent commences in earnest. On either side the path is bounded by woods, where the wild bird sings and the squirrel gambols undisturbed. Before long, you perceive before and above you, a singular rock of very large size, projecting over the path from the right hand side. This is called *Shelter Rock*; a name not altogether inappropriate, as a large party might find refuge from a shower, beneath its overhanging portion. We may here mention that Owl's Head is remarkable for its picturesque rocks. A very eminent landscape painter remarked to us last summer, that he had never, anywhere else, met with such excellent "studies," in this respect, for an artist. Not far beyond "Shelter," is *High Rock*—a huge mass of stone crowned with plummy ferns, and half clad with the greenest moss. A little brook of the purest water is soon reached—it is this stream which supplies the fish pond below. The rivulet crossed, after a rather steep "grade," you hear the tinkle of cow-bells, and suddenly enter a large open space, almost circular in shape and nearly level. After the brisk climbing, the pathway through the *Old Field*, as it is termed, is a pleasant change enough. You may, if you choose, loiter and pick berries—mulberries, blackberries, raspberries &c., and wild flowers, which are very abundant.

Here you have a fine view of one of the mountain ledges, which if you are a sketcher, you will not fail to transfer to your portfolio. Nor will the "Amphitheatre of woods," also visible here, be without its attractions. A "sugar camp" is next passed—in other words, a maple grove; and then we arrive at a circular sort of basin named *Fern Hollow*—the said basin being quite covered with those plants. Still ascending, we get to *Fern Rock*, where a botanist might long luxuriate. The way now becomes pretty steep, but if you halt occasionally to recover breath, you may use your eyes as well as rest your lungs, for there are plenty of objects worthy attention. For instance, here is *Birch Rock*. On the steep hill-side above you are two large, oblong granite rocks—their ends being placed so close together that there does not appear room to place a finger's point between. Yet in that fissure is sufficient earth to nourish a fine birch tree, which seems to rise from, and grow out of the lower stone. Chester Rock (named after a very intelligent boy guide) is a huge mass of limestone partly covered with moss, and crowned with white pine. Onward and upward we go, until we are brought to a stand at the *Toll-Gate*, where it is by no means an unusual thing to find a toll-keeper also. This Toll-Gate is formed by two large rocks, from whose upper surface trees spring upwards, and between which, there is just room for one very stout, or two very slim persons to walk abreast. Hoops have no chance here, unless the circles are changed

into ovals, or elipsis. We have known ladies who were compelled to retire to a leafy bower, hard by, called *Crinoline Chamber*, and divest themselves of their "hindrances," for a Camel may as well attempt to go through the eye of a needle, as a fashionably dressed lady to get through the Toll-Gate. This perilous "pass" having been accomplished, the next object of attraction is the *Chair Rock*, from whose summit the first view of the lake during the ascent, is obtained. Beyond this is *Half-way Log*, where we had better rest; and while we do so, let us state that away to our right, and below us, is one of the most remarkable "bits" of scenery on the mountain; though as it lies out of the main pathway, but comparatively few stumble on it, except by accident. It may, though, be easily reached from the Mountain House, in half an hour. It is a bold escarpment of rock, forming part of the lower of the two ledges which runs across the mountain's eastern side. Two huge walls of limestone meeting in a V shape, enclose near their bases, a triangular platform, some 12 feet from the ground, on which grow grass and wild flowers. Beneath this verdant shelf is a solid rock, near the centre of the face of which, is a small orifice about the size of a goose-quill, from which a stream of the purest water perpetually flows. How far this natural conduit extends cannot be known. It is a natural curiosity, which would be well worth a visit, even were it not for the grandeur of the rocks which tower high above it.

But by this time we have rested, and are now ready for the "tug" of war. Now are to come the "pinches" as the guides say. Here is the first of them—*Break-neck Stairs*. Do not be alarmed at the name, no one ever dislocated their cervical vertebræ there that we are aware of; nor have we, for already we have surmounted them with sculls as well supported as ever. More stairs! Yes—those we now arrive at are named after an "inferior" portion of the frame. Let us buckle to, and try *Weary-toe Steps*. Not so bad though, as the name seems to imply, but the necessity of using our pedal extremities, *does* make them ache a trifle, that's a fact! Next come *Jennings' Staircase*, and *Winding Staircase*, and then *Refreshment Hollow*, where your little tin can will be found useful in conveying water from the spring to your lips. Somewhat refreshed, we now set out for *Spruce Tree Steps*—the roots of those trees forming the stairs. Then comes *Fountain Ravine*, where you will find a little fountain right in the pathway. The next ascent is named after a curious birch tree on the right. Courage—we are getting near the summit! *Shamrock Rock* and the *Giant's Staircase* are "done," and clear of the forests, we stand on the summit of Owl's Head—nearly 3000 feet above the waters of Memphremagog.

As we rest on one of the crags, a pair of Eagles are seen sailing in the air far below us; their rich brown plumage and bald white heads gleaming in the sunshine. They build on some of the inaccessible crags

about here. Falcons of many varieties make their homes on the ledges below. Fish Hawks, a species of Ospray, too, are common. Last summer, we saw one of these birds strike a large fish in the lake, opposite the Mountain House—a fish too large for the winged angler to carry off after it had killed it. Mr. Jennings despatched a boat to the scene of slaughter, from which the Ospray sulkily wheeled away, and a fine shad of four pounds weight smoked on our breakfast table next morning. It is not every landlord who has a bird to provide fish for his guests.

The prospect from Owl's Head summit is magnificent beyond description. On clear days, Montreal can be distinctly seen. Looking south you see Clyde, Barton and Black Rivers, Newport, all the islands on the lake, and the lake itself from end to end. To the north, Durham's Point, Dewey's Point, Knowlton Bay, the Outlet, Orford Mountain, and countless other objects. To the east, Seymour Lake, Stanstead Plain, Rock Island, Salem Pond, Charleston Pond, Derby Centre, Derby line, Willoughby Lake, White Mountains, Little Magog, Massawippee Lake, Georgeville, &c. To the west, the continuation of the Green Mountain Range. To the north-west, the Sugar Loaf and Ridge Mountain, Broome Lake, North and South Troy, Mansonville; and a mile and a half of wilderness stretching from the base of Owl's Head. These are but a few of the objects discernable; we have not space to mention a tithe of them. But let us exam-

ine the summit itself. As might be expected from its appearance from below, it is all split up, or riven into gorges and ravines, from which four distinct peaks ascend. In one of these ravines is the *Freemason's Lodge*, so named from the fact that the Golden Rule Lodge of Stanstead, hold a lodge there once a year, on the 24th of June. It is a spot well calculated for exercising the mysteries of the craft. On a triangular rock are painted the compass and square, and below that masonic emblem the following inscription :

GOLDEN RULE LODGE,

No. 8, Freemasons of Stanstead, held a Communication here Sept. 10, A. L. '57 and '58.

R. W. Brother E. Gustin, D. D., G. M., V. W.

B. W. Rev. H. J. Machin, W. M.

“ E. B. Gustin, P. M.

“ E. B. Rider, “

“ A. Bodwell, “

“ S. Kingsbury, T. I. M.

“ C. B. Baxter.

“ E. H. Fennessy.

“ N. Bachelder.

“ A. C. Hall.

“ C. S. Channell.

“ A. S. Gove.

The descent of the Mountain is comparatively easy. It is remarkable that although so many persons of both sexes have ascended the mountain, no serious accidents have happened; indeed such need not occur, if but common care be taken. A few months since, however, a man named Sabine, had a narrow escape. Near, or rather on the summit is a place called the *Devil's Slide*. Down this, a party of three determined to go, on their way home; two were in port, and these were not a little astounded and dismayed by seeing their companion suddenly shoot by them and suddenly disappear over a ledge, sheer 30 feet deep. He had set out running to overtake his friends and could not stop himself. They of course expected to find him dead and mangled, and cautiously picking their way over the loose stones, at length reached him at the foot of another precipice, sixty feet deep, lying face downward, on a bed of broken rocks! Sabine had struck a rocky shelf after his first descent, and bounding off, ball like, went over the second—90 feet in all. His friends finding him motionless, and to all appearance dead, suggested the propriety of getting assistance to take down the body, for “poor fellow, *he's gone*” said one of them. No sooner were the word's uttered, however, than Sabine first lifted one leg, then his head, and said coolly, “Come along boys, this is the quickest way down!” The poor fellow was a good deal hurt, but no bones were broken, and with assistance he descended. A fortnight's care set him to rights again. We said, the

place he shot from was called *Devil's Slide*, but as there is no record of that sable gentleman's having performed such an extraordinary feat of "ground and lofty tumbling," as Mr. Sabine did—the latter is clearly entitled to have his name substituted for Satan's, and accordingly Sabine's leap has quite superseded the diabolic appellation.

The mineral riches of Owl's Head have been but imperfectly developed. Some years ago, Indians used to dig there for lead, and in later times, some white people also commenced workings; but, as in the case of the Novaculite, the Government stepped in and stopped proceedings. The Mountain was also the scene of a hoax, by some scamp who pretended to have had spiritual revelations concerning mineral riches there, and who duped not a few credulous noodles.

CHAPTER V.

Perkins' Landing—Trout Rock—Cedar Point—Mount Elephantis—Ridge Mountain—Concert Pond—Good News for Trout-takers—Knowlton's Landing—Gibraltar Point—Georgeville—The Sea Serpent—Mount Orford—Magog Outlet—Indian Anecdote.

Once more we are aboard the MOUNTAIN MAID, with our faces turned northward; but, before we leave the wharf, let us pay a well deserved compliment to Mr. Jennings, whose Mountain House is really a Model Hotel. Every thing is done to promote the comfort of the guests, and the charges are most moderate. A gentleman who had sojourned there two summers, declared that mosquitoes were things unknown in that locality; he had never seen but one, and that he suspected came passenger on the boat from Newport. His statement we have had ample corroboration of. The only "Varmint" we saw there, was a dead Bear, which had been killed in the woods, back of the Mountain, and very nice eating Master Bruin proved to be. Only fancy, no mosquitoes, no snakes, no hot nights! Who would not summer it in such an Eden?"

Proceeding north, we keep the western shore, and

glide by some magnificent mountain sides, towards *Perkins' Landing*, enjoying a fine echo, as we fire off our guns and pistols. We pass *Trout Rock*, which rises from the deepest part of the lake, aslo *Cedar Point*. After leaving Perkins', which lies in a pretty bay, turn and view Owl's Head from thence; seen from the south, its head appeared rounded and jagged; from this point it is sharp, peaked, and rises cone-like. It is incomparably the finest and most imposing view of this Monarch of the lake. Before you, and to the left, is the next most remarkable Mountain in this region—*Mount Elephantis*, or as it is sometimes called *Sugar Loaf*. The former is doubtless, most correct.



Mt. Elephantis.

Every one will at once discover the resemblance to

an Elephant's head and back, which its upper part presents. Between this and the next, *Ridge Mountain*, is a singular sheet of water, *Concert Pond*, which lies far above the level of the lake. It abounds with delicious Mountain Trout, (pink-fleshed.) How they got there is the question, for there is, we are told, no perceptible inlet to, or outlet from the pond, which is easily reached by an hour's walk from Perkins', or *Knowlton's Landing*, which is the next reached. This is situated at the entrance of *Knowlton's Bay*, an arm of the lake, which stretches inland for a considerable distance. Just after leaving Knowlton's, the Boat passes *Gibraltar Point*, a bold headland, crowned with trees, and picturesque in every respect. Here is the place to see artist passenger out with pencil and sketch-book. Nearly opposite Knowlton's, on the eastern shore, is GEORGEVILLE, which we are now approaching.

It is a pretty, rural village, and a favorite stopping place for artists and anglers. It contains, being a Port of Entry, a Custom House, has a school, one or two stores, some handsome dwellings, chief among which is the Villa of Captain Fogg, and two hotels, one, the Memphremagog House, at which is the Post Office, kept by Mr. E. S. Channell, and the other, the Union House, kept by Mr. L. Bigelow—both are extremely comfortable establishments.

On the beach, near Georgeville, very beautiful and perfect crystals of quartz are found; geologists would find here a rich field for their investigations. The fish-

ing opposite the village, for longe, is not to be surpassed, and the woods near, abound with game. The lovers of the marvelous will be perhaps glad to know that the *Sea Serpent* occasionally shows itself somewhere in this locality—that mysterious fish-reptile, being by some, supposed to visit the lake through a hole in its deepest part, and to return by the same subteranean, or subaqueous channel, when it desires, for the benefit of its health, to exchange fresh water for salt. We were solemnly assured by one gentleman, that he had actually seen the “critter”—possibly he believed he did—but if Faith can remove Mountains, manufacturing a Sea Serpent must be about as easy as making a Mermaid, according to the ingenious Mr. Barnum’s recipe.

The stage road ride from Georgeville to the outlet is very delightful, and no tourist should fail to hire one of Mr. Channell’s teams, and enjoy it.



Mt. Orford.

Leaving Georgeville, we now cross the lake in a "slant-indicual" direction—*Mount Orford*, the highest land in Canada East, rising grandly before us in the distance. This Mountain is 3,300 feet high, and is surrounded at its base with a wide belt of forest. It is a favorite camping ground for sportsmen, all kinds of game being found there in plenty. The lake, narrowed at Georgeville, now again widens, and *Lord's Island* lies before us. The next landing is *Paige's*, from whence we again cross the lake diagonally, and soon arrive at the termination of our Lake Trip—*Magog Village*, or the *Outlet*, as it is more generally termed.

Here a stage will be found in waiting to convey passengers to *Sherbrooke*, some fifteen miles distant, where is a depot of the Grand Trunk Railroad, in the cars of which, Montreal or Quebec may be reached the same evening. On the road to Sherbrooke, Little Magog Lake is passed, but it possesses no features of peculiar interest.

The village of Magog is but small. It contains a Catholic Church, a good hotel, kept by Mr. Buck, some stores, a Post Office, and some extensive saw mills, the water privilege caused by the fall at the outlet of the lake, being very fine. Here the Mountain Maid remains for an hour or two, before her return trip, affording passengers an opportunity to stroll, or dine.

Magog was once a strong-hold of the Indians, and a rather interesting story was related to us by one of the "oldest inhabitants," who had received it traditionally,

and doubted not of its truth. A young and handsome warrior of the Tribe had committed some offence for which death was the inevitable punishment. He admitted the justice of his sentence; but only asked one favor. It was that he might be permitted to visit an aged father many miles distant, on his promising to return on the day fixed for his death. His request was granted, and the young "bravo" departed. Some months elapsed, and the time of the appointed torturing process drew near; but all felt sure that the unfortunate youth's word would be kept, and it was; precisely on the day, at the hour appointed, he marched into the circle of wigwams, and merely saying "I am ready," gave himself up a willing offering to the offended justice of his Tribe. Occasionally stone arrow heads and other Indian relics are dug up at Magog, as they are also at Owl's Head.

* A list (necessarily incomplete,) of some of the principal animals, birds, fishes, and reptiles, to be found in Lake Memphremagog, and in its vicinity, may not be uninteresting:—

ANIMALS.

Deer, Bears, Foxes, Squirrels, (various,) Hares, Rabbits, Woodchuck, Beaver.

BIRDS.

Eagles, (various,) Falcons, (various,) Hawks, Gulls, Pigeons, Loon, Duck, Partridge, Snipe, Woodcock, Brant, Geese.

FISHES.

Longe, Pickerel, Shadwaiters, Eels, Rock Bass, Catfish, Suckers, Trout.

REPTILES.

Common Green Snake, Black Snake, Chicken Snake, Garter Snake, Toads, Frogs,—(there are no known venomous reptiles—that we are aware of.)

GEOLOGICAL CHARACTERISTICS.

For the Geological Characteristics of the lake shores, we refer the reader to the respective reports of Professor Hitchcock, and Sir William Logan. Details of such would be quite out of place in a *brochure*, such as this.

CLIMATE.

No climate can be more salubrious than that on and about Lake Memphremagog. Tempests are but seldom experienced, and the air is pure and bracing. The vicinity of the lake always ensures a sufficiency of moisture in the atmosphere. The Summers are cool, and the Winters far milder than in Boston or New York.

PRINCIPAL HOTELS IN THE CHIEF CITIES, TOWNS AND VILLAGES ON THE ROUTE TO OR FROM MEMPHREMAGOG.

NEW YORK.—St. Nicholas, Metropolitan, Astor, Everett House, Claredon, &c., &c.

BOSTON.—Revere, Tremont, American House, Parker's, Marlboro'.

SPRINGFIELD.—Massasoit House, American House.

LOWELL.—Merrimack House, American House.

CONCORD.—Phoenix, Eagle, Gass's American House.

WHITE RIVER JUNCTION.—Junction House.

NEWBURY.—Newbury House, Spring Hotel.

ST. JOHNSBURY.—St. Johnsbury House.

BARTON.—Barton Hotel.

NEWPORT.—Memphremagog House.

QUEBEC.—Russell's Hotel.

MONTREAL.—St. Lawrence Hall, Ottawa House, Montreal House.

SHERBROOKE.—Sherbrooke House, Cheney's Hotel.

PORTLAND.—American House, Walnut Street House.



ROUTE TABLE.

From Boston, via. Boston and Maine, Concord, Manchester, and Lawrence, Boston, Concord and Montreal Railroad, and Connecticut and Passumpsic Rivers Railroad to Barton. STATION, HAYMARKET SQUARE, BOSTON.

From Boston, via. Boston and Lowell, Nashua and Lowell, Concord, Northern and Connecticut and Passumpsic Rivers Railroad, up the valleys of the Connecticut and Passumpsic Rivers, to Barton. STATION, CAUSEWAY STREET, BOSTON.

Trains leave Boston by both routes at 7.30 A. M., 12 M., and 5 o'clock, P. M.

Passengers taking 7.30 A. M. train, reach the lake the same evening; those taking 12 M. train, lodge at White River Junction; those taking 5 P. M., train, lodge at Concord, and reach the lake the next evening.

Distance from Boston to Lake Memphremagog.

Railroad,	-	-	-	-	-	232
Stage,	-	-	-	-	-	14

246 Miles.

FARE \$7.50.

From New York, by railroad, via. New Haven, Hartford, Springfield and Bellows Falls. STATION, 27th STREET.

Trains leave at 8 o'clock, A. M., and 4 o'clock, P. M. Passengers from New York, at 8 o'clock, A. M., can stop over night at Hartford, Springfield, or Northampton, or any other point *above* Hartford, and reach the lake the next evening, at a seasonable hour.

Passengers leaving New York at 4 o'clock, P. M., can stop at the same places over night, and reach the lake as soon as by leaving at 8 o'clock, A. M.

Dine at White River Junction; tea at Barton.

Distance from New York to Lake Memphremagog.

Railroad, - - - - - 352

Stage, - - - - - 14

366 Miles.

FARE, \$10.25.

WHITE AND FRANCONIA MOUNTAINS

TO

L A K E M E M P H R E M A G O G .

Leave the White Mountains at 6 o'clock, A. M.

“ “ Franconia “ “ 7 o'clock, A. M.

By Stage, to Littleton, thence by White Mountains Railroad to Wells River, dine at the Coossuck House, or Newbury, at which latter village are the “ Sulphur Springs,” and two good Hotels; arriving at 10.30 A. M., tourists can dine, take the up train of the Connecticut and Passumpsic Rivers Railroad, at 3.45 P. M., sup at Barton, thence by stage to the lake the same evening. Tickets and *reliable information* can be had of the Agent of the Connecticut and Passumpsic Rivers Railroad at the White Mountains, and the Franconia Mountains.

Fare from White Mountains, \$5.55.

Distance 115 miles.

Fare from Franconia Mountains, \$4.80.

Distance 102 miles.

Tickets can also be bought at a *reduced rate*, by Excursionists, for the round trip, from either of the Mountains, to *Quebec, or Montreal, and back*, to Wells River, or White River Junction.

FROM LAKE MEMPHREMAGOG

TO

QUEBEC AND MONTREAL.

Leave Newport at 7 o'clock, A. M., by Steamer Mountain Maid, Capt. Fogg, to the Outlet, (30 miles,) thence by stage, to Sherbrooke, (15 miles,) dine, take cars of the Grand Trunk Railway, and reach either of above cities same evening.

Returning, leave Quebec at 5.45 A. M., Montreal at 7 o'clock, A. M., by Grand Trunk Railway; dine at Sherbrooke, thence by stage to the Outlet, take Steamer, touching at the "*Mountain House*," lodge at Newport, and thence next morning, by stage to Barton; Connecticut and Passumpsic Rivers Railroad to the Mountains, Boston or New York, same evening, five hours quicker than by any other route.

ur-
n-
lls

L .

ner
(s,)
ake
e of

d at
e at
ani-
ew-
on ;
the
five

